



HAL
open science

Abundance and spatial patterns over time of Vibrionaceae and *Vibrio harveyi* in water and biofilm from a seabass aquaculture facility

Julia Mougin, Roxane Roquigny, Christophe Flahaut, Maryse
Bonnin-Jusserand, Thierry Grard, Cédric Le Bris

► **To cite this version:**

Julia Mougin, Roxane Roquigny, Christophe Flahaut, Maryse Bonnin-Jusserand, Thierry Grard, et al.. Abundance and spatial patterns over time of Vibrionaceae and *Vibrio harveyi* in water and biofilm from a seabass aquaculture facility. *Aquaculture*, 2021, 542, pp.736862. 10.1016/j.aquaculture.2021.736862 . hal-03697166

HAL Id: hal-03697166

<https://ulco.hal.science/hal-03697166>

Submitted on 16 Jun 2022

HAL is a multi-disciplinary open access archive for the deposit and dissemination of scientific research documents, whether they are published or not. The documents may come from teaching and research institutions in France or abroad, or from public or private research centers.

L'archive ouverte pluridisciplinaire **HAL**, est destinée au dépôt et à la diffusion de documents scientifiques de niveau recherche, publiés ou non, émanant des établissements d'enseignement et de recherche français ou étrangers, des laboratoires publics ou privés.

Aquaculture

Abundance and spatial patterns over time of Vibrionaceae and *Vibrio harveyi* in water and biofilm from a seabass aquaculture facility

--Manuscript Draft--

Manuscript Number:	
Article Type:	Research Paper
Section/Category:	Diseases
Keywords:	Aquaculture; MALDI-TOF MS; <i>Vibrio harveyi</i> ; Vibrionaceae; real-time PCR
Corresponding Author:	Cédric Le Bris Université du Littoral Côte d'Opale FRANCE
First Author:	Julia Mougin
Order of Authors:	Julia Mougin Roxane Roquigny Christophe Flahaut Maryse Bonnin-Jusserand Thierry Grard Cédric Le Bris
Abstract:	<p>One of the major threats to the seabass (<i>Dicentrarchus labrax</i>) aquaculture sector is the development of vibriosis, a disease caused mainly by bacteria from the family Vibrionaceae, especially <i>Vibrio harveyi</i>. This disease can result in important economic losses or severe public health problems. Furthermore, bacteria can form biofilms on the walls of aquaculture tanks, leading to the persistence of potentially pathogenic bacteria on fish farms. Given the relationship between abundance in the surrounding environment and prevalence in fish, monitoring the presence of <i>V. harveyi</i> in rearing water and biofilms over time may help better understand the dynamics of the pathogen and factors that increase the risk of vibriosis outbreaks.</p> <p>In this study, the dynamics and spatial patterns of cultivable Vibrionaceae and <i>V. harveyi</i> in water and biofilms from rearing tanks and in the cold- and hot-water inlets supplying the farm were monitored for 7 months. Several potential seabass pathogens were isolated: <i>Photobacterium damsela</i>, <i>Vibrio alginolyticus</i>, <i>V. harveyi</i>, <i>Vibrio owensii</i> and <i>Vibrio rotiferianus</i>. However, <i>V. harveyi</i> remained the most problematic pathogen. Its relatively constant presence in water and biofilm samples throughout the sampling campaign represents a risk for vibriosis outbreaks. Moreover, the correlation between water temperature and the abundance of <i>V. harveyi</i> suggests that the risk fluctuates throughout the year. Obtaining qualitative data regarding the relative diversity of viable culturable Vibrionaceae and quantitative data on the abundance of <i>V. harveyi</i> over time in a seabass aquaculture facility is the essential first step for designing new solutions to manage vibriosis.</p>
Suggested Reviewers:	Gaber Abdellrazeq Alexandria University Faculty of Veterinary Medicine gaber.abdellatif@alexu.edu.eg
	Sadok Khouadja Universite de Monastir Faculte de Medecine de Monastir khouadja_sadok@yahoo.fr
	Jung-Lim Lee Department of Human Ecology, Food Science and Biotechnology, College of Agricultural and Related Sciences, DelawareState University, Dover, DE, United State jlee@desu.edu
	Jale Korun Department of Fish Diseases, Faculty of Fisheries, Akdeniz University, Antalya-TURKEY

	jalekorun@yahoo.com
Opposed Reviewers:	

Dr Cedric Le Bris
Université du Littoral Côte d'Opale (ULCO)
UMR 1158 BioEcoAgro, Institut Charles Viollette, USC Anses
Equipe Biochimie des Produits Aquatiques (BPA)
Bd Bassin Napoléon, BP 120
62327 Boulogne-sur-Mer, France
cedric.le-bris@univ-littoral.fr

Dr. Peter Bossier
Disease section editor
Aquaculture

November 17, 2020

Dear Dr. Bossier,

I am pleased to submit an original research article entitled "**Abundance and spatial patterns over time of Vibrionaceae and *Vibrio harveyi* in water and biofilm from a seabass aquaculture facility**" for consideration for publication in Aquaculture. The text reports the result of a study conducted by scientists from the "UMR 1158 BioEcoAgro, Institut Charles Viollette (Univ. Littoral Côte d'Opale), Boulogne-sur-Mer, France".

This manuscript has not been published and is not under consideration for publication elsewhere. All of the authors approve of the manuscript. We have no conflicts of interest to disclose.

Nowadays, aquaculture is the main source of marine food since the world total marine captures continue to decrease. Diseases, such as vibriosis caused by Vibrionaceae and particularly *V. harveyi*, affect aquaculture production. Today, prevention lies in understanding the dynamic and the persistence of *V. harveyi* on farms and environmental factors that increase the risk of vibriosis outbreaks. Therefore, this study will help designing of suitable prophylactic control measures, instead of using curative methods such as antibiotics.

The authors hope that you will find this manuscript suitable for publication in Aquaculture. Thank you for your consideration.

Sincerely,

Cedric Le Bris, PhD
Assistant Professor, UMR 1158 BioEcoAgro, Institut Charles Viollette, USC Anses, équipe Biochimie des Produits Aquatiques (BPA), Université du Littoral Côte d'Opale, Boulogne-sur-Mer



Abundance and spatial patterns over time of Vibrionaceae and *Vibrio harveyi* in water and biofilm from a seabass aquaculture facility

Julia Mougin, Roxane Roquigny, Christophe Flahaut, Maryse Bonnin-Jusserand, Thierry Grard and Cédric Le Bris

Highlights

- The spatio-temporal dynamics of Vibrionaceae cultivable at 37 °C was assessed
- Abundance and spatial patterns of *V. harveyi* was studied in both biofilm and water
- Several pathogenic bacteria were regularly isolated from biofilm and rearing water
- The presence of *V. harveyi* in biofilms may facilitate its persistence in the farm
- A correlation between abundance of *V. harveyi* and temperature was detected

1
2
3
4 1 **Abundance and spatial patterns over time of Vibrionaceae and *Vibrio harveyi* in water and**
5
6 2 **biofilm from a seabass aquaculture facility**

7
8
9 3 Julia Mougin^a, Roxane Roquigny^a, Christophe Flahaut^a, Maryse Bonnin-Jusserand^a, Thierry
10
11 4 Grard^a and Cédric Le Bris^{a*}

12
13
14 5 ^a Univ. Littoral Côte d'Opale, UMR 1158 BioEcoAgro, Institut Charles Viollette, USC ANSES,
15
16 6 INRAe, Univ. Artois, Univ. Lille, Univ. Picardie Jules Verne, Univ. Liège, Yncréa, F-62200
17
18 7 Boulogne-sur-Mer, France

19
20
21 8 * Correspondence: Cédric Le Bris cedric.le-bris@univ-littoral.fr

22
23 9 **Keywords:** Aquaculture, MALDI-TOF MS, *Vibrio harveyi*, Vibrionaceae, real-time PCR

24
25
26 10 **Abstract**

27
28 11 One of the major threats to the seabass (*Dicentrarchus labrax*) aquaculture sector is the
29
30 12 development of vibriosis, a disease caused mainly by bacteria from the family Vibrionaceae,
31
32 13 especially *Vibrio harveyi*. This disease can result in important economic losses or severe public
33
34 14 health problems. Furthermore, bacteria can form biofilms on the walls of aquaculture tanks,
35
36 15 leading to the persistence of potentially pathogenic bacteria on fish farms. Given the relationship
37
38 16 between abundance in the surrounding environment and prevalence in fish, monitoring the
39
40 17 presence of *V. harveyi* in rearing water and biofilms over time may help better understand the
41
42 18 dynamics of the pathogen and factors that increase the risk of vibriosis outbreaks.
43
44 19 In this study, the dynamics and spatial patterns of cultivable Vibrionaceae and *V. harveyi* in water
45
46 20 and biofilms from rearing tanks and in the cold- and hot-water inlets supplying the farm were
47
48 21 monitored for 7 months. Several potential seabass pathogens were isolated:
49
50 22 *Photobacterium damsela*, *Vibrio alginolyticus*, *V. harveyi*, *Vibrio owensii* and
51
52 23 *Vibrio rotiferianus*. However, *V. harveyi* remained the most problematic pathogen. Its relatively
53
54 24 constant presence in water and biofilm samples throughout the sampling campaign represents a
55
56
57
58
59
60
61
62
63
64
65

1
2
3
4 25 risk for vibriosis outbreaks. Moreover, the correlation between water temperature and the
5
6 26 abundance of *V. harveyi* suggests that the risk fluctuates throughout the year. Obtaining
7
8 27 qualitative data regarding the relative diversity of viable culturable Vibrionaceae and quantitative
9
10 28 data on the abundance of *V. harveyi* over time in a seabass aquaculture facility is the essential
11
12 29 first step for designing new solutions to manage vibriosis.
13
14
15

16 30 **1. Introduction**

17
18 31 In the context of rapid world population growth and the steep decline in marine fisheries catches,
19
20 32 the development of aquaculture is of significant interest for ensuring global food security and the
21
22 33 conservation of wild marine stocks. In Europe, seabass (*Dicentrarchus labrax*) is currently one of
23
24 34 the most farmed fish species and this high-value species is heavily traded (Bostock *et al.*, 2016;
25
26 35 FAO, 2018). Bacterial diseases such as pasteurellosis (*Photobacterium damsela* subsp.
27
28 36 *piscicida*), photobacteriosis (*Photobacterium damsela* subsp. *damsela*), tenacibaculosis
29
30 37 (*Tenacibaculum* spp.), and vibriosis (*Vibrio* spp.) represent severe threats to the seabass
31
32 38 aquaculture sector (Buchmann *et al.*, 2009; Muniesa *et al.*, 2020). They may not only result in
33
34 39 mass mortality events and highly negative economic effects, but are also potential zoonotic
35
36 40 sources and may pose a risk for human health (Austin, 2010).
37
38
39
40
41
42

43 41 Among them, vibriosis, caused by certain species of *Vibrio*, stand as the most significant disease,
44
45 42 affecting seabass at all stages of production chain (Korun and Timur, 2008; Le-Breton, 1999;
46
47 43 Muniesa *et al.*, 2020; Pujalte *et al.*, 2003). This disease is characterized by anorexia, erratic
48
49 44 swimming behavior, exophthalmos, darkening of body color, pale gills, hemorrhages, ulcers, and
50
51 45 skin lesions (Korun and Timur, 2008). Several *Vibrio* species have been reported in seabass
52
53 46 infections: *Vibrio alginolyticus*, *Vibrio anguillarum*, *Vibrio harveyi*, *Vibrio ordalii*,
54
55 47 *Vibrio parahaemolyticus* and *Vibrio vulnificus* (Ghittino *et al.*, 2003; Kahla-Nakbi *et al.*, 2006;
56
57 48 Khouadja *et al.*, 2013; Korun and Timur, 2008). *Vibrio anguillarum* has been the main significant
58
59
60
61
62
63
64
65

1
2
3
4 49 seabass pathogens for decades (Vázquez and Muñoz-Cueto, 2014). Commercially available
5
6 50 prophylactic strategies, such as vaccines, have thus been extensively developed and effectively
7
8
9 51 applied (Dadar *et al.*, 2017). However, *V. harveyi* has recently been identified as an emerging
10
11 52 major concern for seabass aquaculture and, to date, there are no specific, effective prophylactic
12
13
14 53 control measures (Dadar *et al.*, 2017; Vendramin *et al.*, 2016).
15
16 54 *Vibrio harveyi* is a Gram-negative bacterium, ubiquitous in the marine environment, particularly
17
18
19 55 in temperate and tropical waters. This species can be found in a free-swimming state, in biofilms
20
21 56 attached to biotic and abiotic surfaces, or in symbiotic and host-pathogen interactions
22
23 57 (Montánchez and Kaberdin, 2019). Importantly, *V. harveyi* can be pathogen for a wide range of
24
25
26 58 cultivated hosts, including crustaceans, mollusks or fishes (Austin and Zhang, 2006). Its
27
28
29 59 occurrence is likely to increase due to global warming and may lead to further *V. harveyi*-
30
31 60 associated infections and have devastating effects for the aquaculture sector (Vezzulli *et al.*,
32
33 61 2015). Interestingly, vibriosis outbreaks in seabass farms exhibit strong seasonality and are more
34
35
36 62 likely to occur from June to November, when the water temperature is maximal (Pujalte *et al.*,
37
38 63 2003). Warmer temperatures may indeed increase the abundance of viable *V. harveyi* in the
39
40
41 64 surrounding environment and thus increase the prevalence of *V. harveyi* in fish (Kim and Lee,
42
43 65 2017). Importantly, contamination of fish usually occurs through contact with contaminated
44
45 66 water via the digestive tract or skin (O'Toole *et al.*, 2004). Although the development of a disease
46
47
48 67 arises from the contamination of fish, the abundance of the pathogen in the surrounding
49
50 68 environment may be an indicator of the risk of vibriosis. Other environmental factors such as
51
52
53 69 salinity, fish density, pH, or the susceptibility and physiological state of the host, may have an
54
55 70 impact on the development of vibriosis (Maulvault *et al.*, 2018; Prayitno and Latchford, 1995;
56
57
58 71 Snieszko, 1974; Vazzana *et al.*, 2002). Moreover, biofilm formation on the walls of rearing tanks
59
60 72 may enhance the risk of vibriosis outbreaks. Biofilms can facilitate resistance to antibiotics, and

1
2
3
4 73 water sanitizers and may induce the persistence of potentially pathogenic bacteria in the
5
6 74 aquaculture facility (Bourne *et al.*, 2006; Karunasagar *et al.*, 1996). Thus, the release of
7
8
9 75 *V. harveyi* from biofilms in the rearing water or the contact of fish with the walls of aquaculture
10
11 76 tanks may increase the prevalence of bacteria in fish and increase the risk of vibriosis outbreaks.
12
13
14 77 Therefore, monitoring the abundance of *V. harveyi* in the surrounding environment, such as in the
15
16 78 rearing water and biofilms, may be an indicator of the *V. harveyi* contamination of seabass and
17
18
19 79 thus of the probability of vibriosis outbreaks. Moreover, greater understanding of the correlation
20
21 80 between the abundance, dynamics, and spatial patterns of *V. harveyi* and environmental biotic
22
23
24 81 and abiotic factors might help to control vibriosis in aquaculture facilities.
25
26 82 Here, we report the dynamics and spatial patterns of cultivable Vibrionaceae and *V. harveyi*,
27
28
29 83 monitored in 2018 from April to October (months when vibriosis is most likely to strike). The
30
31 84 study was conducted on a semi-closed seabass farm, located in Northern France. The bacterial
32
33
34 85 abundance and relative diversity were determined from water and biofilm in rearing tanks, and in
35
36 86 the cold- and hot-water inlets supplying the farm. The dynamics of cultivable Vibrionaceae was
37
38
39 87 assessed by culturing them on selective media at 37°C. Presumptive cultivable Vibrionaceae were
40
41
42 88 then identified using matrix-assisted laser desorption/ionization-time of flight mass spectrometry
43
44
45 89 (MALDI-TOF MS) using an in-house database, called Luvibase, previously and specifically
46
47
48 90 designed to identify *Vibrio* species from the Harveyi clade (Mougin *et al.*, 2020b). The
49
50
51 91 abundance of *V. harveyi* was estimated using a *mreb*-targeted real-time PCR (Mougin *et al.*,
52
53
54 92 2020a). Environmental parameters and fish density and/or mortality were recorded through the
55
56
57 93 sampling campaign to identify the environmental factors that best correlate with bacterial
58
59
60 94 abundance. Overall, the objective was to gain a greater understanding regarding the dynamics
61
62
63 95 over time and spatial pattern of potentially pathogenic bacteria for seabass. This understanding
64
65 96 can help design prophylactic measures to better manage vibriosis outbreaks.

1
2
3
4
5
6
7
8
9
10
11
12
13
14
15
16
17
18
19
20
21
22
23
24
25
26
27
28
29
30
31
32
33
34
35
36
37
38
39
40
41
42
43
44
45
46
47
48
49
50
51
52
53
54
55
56
57
58
59
60
61
62
63
64
65

97 **2. Material and methods**

98 **Sampling site**

99 This study was conducted from April to October 2018 in Aquanord Ichthus, a fish farm located in
100 Gravelines, France along the southwestern coast of the North Sea. Because the aquaculture
101 system is situated near a nuclear power plant, the site is monitored annually in order to detect any
102 abnormalities in the development of the natural marine environment (Antajan *et al.*, 2019).

103 The farm is an intensive semi-closed system managed by a private company. This company
104 currently raises seabass (*Dicentrarchus labrax*) and seabream (*Sparus aurata*) during the on-
105 growing phase in flow-through tanks constructed from concrete. The water supply is regulated
106 via two water inlets: a “cold-water inlet” from the natural marine environment and a “hot-water
107 inlet” from the cooling system of a nuclear power plant nearby (Fig. 1). Water flow into the
108 rearing tanks is regulated using a valve to maintain uniform water quality and temperature
109 through the year. Overall, from mid-July to mid-September, the rearing tanks are supplied by the
110 cold-water inlet only. During the rest of the year, the rearing tanks are supplied by both cold- and
111 hot-water inlets. Fish are fed daily and aeration is provided to maintain an optimal level of
112 dissolved oxygen (DO). Farmers use a commercial vaccine against *V. anguillarum* and an annual
113 autogenous vaccine against *V. harveyi*. The latter is developed annually from pathogens isolated
114 from the spleens of moribund fish during previous outbreaks.

115 Three similar rearing tanks were chosen for this study. The water capacity of each tank was 75
116 m³, with a water column of 1.3 m and a holding capacity of around 30 000 seabass. Average fish
117 stock density was 48.13 kg.m⁻³, with an average fish weight of 200 g. During the sampling
118 campaign, the aquaculture facility provided weekly biomass and mortality data from each rearing
119 tank.

120 **Sample collection and environmental parameters**

1
2
3
4 121 Two types of samples, water and biofilm, were collected from three tanks containing seabass and
5
6 122 from the cold- and hot-water inlets. Water samples were collected weekly from tanks and hot-
7
8
9 123 and cold-water inlets. Biofilm samples were collected every two weeks from tanks. Both types of
10
11 124 samples were harvested as previously detailed in Mougín *et al.* (2020a). Briefly, a volume of 1 L
12
13
14 125 of water was collected in a sterile bottle in triplicate, from both water inlets and from the three
15
16 126 rearing tanks, just below the surface of the water. Pieces of concrete, made of the same material
17
18
19 127 used to build the tanks and placed 20 cm below the surface of the water, were collected in
20
21 128 triplicate from the three rearing tanks (Appendix A). Samples were maintained on ice during
22
23 129 transport to the laboratory. A total of 465 water samples and 144 biofilm samples were thus
24
25
26 130 collected during the sampling campaign.

27
28 131 During sample collection, water temperature, pH, salinity, and conductivity were measured in
29
30
31 132 each tank and in both inlets, within 50 cm of the water surface using a multi-parameter probe
32
33 133 (Odeon Open X, Aqualabo, Champigny-sur-Marne, France). DO concentration was also
34
35
36 134 measured in rearing tanks only using a Handy Polaris DO meter (OxyGuard, Farum, Denmark).

37 38 135 **Sample preparation**

39
40 136 Samples were processed as previously described in Mougín *et al.* (2019) and Mougín *et al.*
41
42
43 137 (2020a). Briefly, water samples were filtered through 0.45 µm pore- size nitrocellulose filters
44
45 138 (Sartorius, Göttingen, Germany). Filters were then immersed in 25 mL of Luria-Bertani broth
46
47
48 139 supplemented with 20% NaCl (LBS) and 20% glycerol, and stored at -80 °C until analysis.
49
50 140 Biofilms from the concrete samples were collected using a homemade sterile stainless steel jig by
51
52
53 141 swabbing with two 2.34 cm² swabs. The swabs (150C, Copan, Brescia, Italy) were then
54
55 142 immersed in 3 mL of LBS with 20% glycerol and stored at -80 °C until analysis. Subsequently,
56
57
58 143 both types of samples were defrosted at room temperature and vortexed for 3 min to dislodge
59
60 144 bacteria from the filters and swabs. Filters and swabs were removed the LBS-glycerol solution

1
2
3
4 145 and the liquid was centrifuged at 8000×g for 10 min. The cell pellets were then dissolved in 3 mL
5
6 146 of physiological water (0.9% NaCl) and centrifuged at 8000×g for 10 min. Supernatants were
7
8
9 147 removed and the cell pellets were dissolved in 2 mL of physiological water. Samples were then
10
11 148 split into two subsamples. One subsample of 1800 µL was used to quantify *V. harveyi* using real-
12
13
14 149 time PCR. The other 200 µL subsample was used for relative quantification and identification of
15
16 150 presumptive cultivable Vibrionaceae by plating on selective agar media and by MALDI TOF MS.

18 151 **Quantification of *V. harveyi* using real-time PCR**

20
21 152 The 1800 µl subsample was centrifuged at 8000×g for 10 min and the supernatant was removed.
22
23 153 Total DNA was extracted from the cell pellet, using the DNeasy PowerBiofilm kit (Qiagen,
24
25
26 154 Hilden, Germany) in accordance with manufacturer's protocol, selected according to Mougin *et*
27
28 155 *al.* (2020a). Relative quantification of *V. harveyi* based on a standard curve was performed
29
30
31 156 according to the previously optimized real-time PCR protocol in Mougin *et al.* (2020a), using
32
33 157 *V. harveyi*-specific primers targeting the *mreB* gene (synthesized by TIB MOLBIOL
34
35
36 158 Syntheselabor GmbH, Berlin, Germany). Briefly, pure DNA of the collection strain *V. harveyi*
37
38 159 LMG 4044 was extracted using the DNeasy Blood&Tissue kit (Qiagen, Hilden, Germany). Purity
39
40
41 160 was verified on a DeNovix DS-11 spectrophotometer (UV spectroscopy, Clinisciences, Nanterre,
42
43 161 France) and the quantity was determined using a Qubit 3.0 fluorometer (dsDNA High-Sensitivity
44
45 162 assay), (Invitrogen, Carlsbad, CA, USA). Then, standard curves were generated from a series of
46
47
48 163 10-fold dilutions of pure DNA of the collection strain *V. harveyi* LMG 4044. For each assay, the
49
50 164 calibration curve was plotted using the means of the threshold cycle (C_T) values from two
51
52
53 165 replicate series versus the logarithm of each dilution factor. Each extracted environmental DNA
54
55 166 template was analyzed at a 10-fold dilution to avoid the effects of real-time PCR inhibitors.
56
57
58 167 Genome copy equivalent (GE) concentrations were then estimated, taking the dilution factor into
59
60 168 account. All quantitative PCR reactions were run on a LightCycler® 480 (Roche Diagnostics,

1
2
3
4 169 France) with a positive control (LMG 4044 *V. harveyi* DNA), a negative control (CIP 70.67
5
6 170 *V. campbellii* DNA), and a no template control (NTC), DNA-free. Melting curve analysis was
7
8
9 171 performed to confirm the specificity of the fluorescent signals. Each extracted environmental
10
11 172 DNA template was analyzed at least twice to ensure robust measurements.

13
14 173 **Quantification of presumptive Vibrionaceae and identification using MALDI-TOF MS**

15
16 174 An aliquot of 100 µL from the second subsample was plated on thiosulfate-citrate-bile salts-
17
18 175 sucrose (TCBS) agar (Biokar Diagnostics, Beauvais, France). The remaining 100 µL was serially
19
20
21 176 10-fold diluted in physiological water (10^{-1} , 10^{-2} , 10^{-3}) and 100 µL of each dilution was plated
22
23 177 onto TCBS agar. All plates were then incubated at 37 °C overnight. Presumptive cultivable
24
25
26 178 Vibrionaceae colony forming units (CFUs) were counted using a Scan 500 plate reader
27
28 179 (Interscience, Saint-Nom-la-Bretèche, France) and the concentration in each sample was
29
30
31 180 estimated taking the dilution factor into account.

32
33 181 Different colony morphotypes were screened on the basis of color (green or yellow), color shade,
34
35 182 size, circumference (smooth or irregular) and presence/absence of a halo within 10 min after
36
37
38 183 removal from the incubator. One colony of each different morphotype was randomly selected and
39
40 184 incubated on LBS agar at 37 °C overnight. The morphological features of each selected colony
41
42
43 185 were recorded. Pure bacteria were stocked in LBS broth supplemented with 20% glycerol at -
44
45 186 80 °C until identification using MALDI-TOF MS.

47
48 187 Subsequently, once defrosted, these bacterial isolates were subcultured on marine agar (MA),
49
50 188 (Difco Laboratories, Detroit, MI, USA) and incubated for 24 h, at 37 °C. Then, a single colony
51
52 189 was plated on MA (Difco Laboratories) and incubated 24 h, at 37 °C to ensure the purity of the
53
54
55 190 isolate. Preparation of bacterial extracts, target-loading and acquisition of MALDI-TOF MS
56
57 191 profiles were performed as previously described in Mougin *et al.* (2020b). Briefly, the cellular
58
59
60 192 proteins of each bacterial isolate were extracted from bacterial cells according to manufacturer's

1
2
3
4 193 recommendations (Bruker France, Wissembourg, France). The extracts were stored at -20 °C
5
6 194 until use. Then, 1 µL of the supernatant from each protein extract was deposited onto a clean 384-
7
8
9 195 target ground steel microtiter plate (Bruker France) in four replicates. After air drying, 1 µL of a
10
11 196 10 mg.mL⁻¹ matrix solution of α -cyano-4-hydroxycinnamic acid (CHCA) in 50% acetonitrile and
12
13
14 197 2.5% trifluoroacetic acid (Sigma-Aldrich, St. Louis, MO, USA) was overlain on each spot.
15
16 198 MALDI-TOF MS analysis was performed using an Autoflex SpeedTM (Bruker France), running
17
18
19 199 Flexcontrol 3.4 software (Bruker France). The Bruker bacterial test standard (BTS, Bruker
20
21 200 France) was used to calibrate the mass spectrometer before each run, according to the
22
23 201 manufacturer's recommendations. Mass spectra were acquired in the positive linear ion mode
24
25
26 202 across a mass/charge (m/z) ratio of 2000-20,000 Da. Mass spectra were acquired using the
27
28 203 manufacturer's automatic MBT_FC.par method. For each MALDI-TOF MS profile, mass spectra
29
30
31 204 were obtained from 5000 laser shots in 1000 shot steps performed randomly from different areas
32
33 205 of the spot.
34
35 206 Each MALDI-TOF MS profile was first compared with the mass spectra profiles (MSPs) of the
36
37
38 207 Bruker BioTyper database ver.9.0.0.0 implemented with the Luvibase, a supplemental, in-house
39
40 208 *Vibrio* database (Mougin *et al.*, 2020b). The degree of concordance between experimental
41
42
43 209 MALDI-TOF MS profiles and the MSPs was evaluated using a log-score calculated using the
44
45 210 MALDI BioTyper Compass Explorer ver.4.1 (Bruker France). A log-score exceeding 2.3
46
47
48 211 indicated a highly probable identification at the species level; a log-score between 2.0 and 2.3
49
50 212 indicated a probable identification at the species level; a log-score between 1.7 and 2.0 indicated
51
52
53 213 a probable identification at the genus level only; and a log-score below 1.7 indicated no
54
55 214 significant similarities between MSPs included in the databases and the unknown profile.
56

57 215 **Statistical analysis**

1
2
3
4 216 All statistical analyses were performed using RStudio 3.5.2 software (R Core Team, 2013).
5
6 217 Variation in bacterial abundance and environmental parameters were analyzed for each tank and
7
8
9 218 inlet separately. A Kruskal-Wallis test for multiple comparisons and a Wilcoxon test for pairwise
10
11 219 comparisons were used to analyze bacterial abundance between the three tanks and the hot- and
12
13
14 220 cold-water inlets. A generalized linear mixed model with a random effect on time was used to
15
16 221 reveal correlations between selected environmental factors: temperature, pH, salinity,
17
18
19 222 conductivity, DO, fish data (i.e. biomass and mortality) and bacterial abundances. The models
20
21 223 were constructed using the function lme in the nlme package ver. 3.1-137 (Pinheiro *et al.*, 2018)
22
23 224 by excluding non-significant parameters or interactions one by one, starting with the interaction
24
25
26 225 terms. For all tests, a p-value of < 0.05 was considered statistically significant. All graphics were
27
28 226 drawn using the ggplot2 packages ver. 2.2.1 (Wickham, 2016).
29

30 227 **3. Results**

31 228 **Water quality and fish density and mortality**

32
33 229 The values of the parameters describing water quality and fish density and mortality recorded
34
35
36 230 from April to October 2018 are given in Table 1. In the cold-water inlet, the average temperature
37
38 231 was 16.4 ± 3.5 °C and values fluctuated widely with a minimum of 9.1 °C, in April, and a
39
40
41 232 maximum of 21.1 °C, in August. The pH, salinity, and conductivity did not vary widely and were
42
43 233 7.9 ± 0.3 , 34.2 ± 0.4 and 51.9 ± 0.6 ms.cm⁻¹, respectively. In the hot-water inlet, average
44
45
46 234 temperature was 23.8 ± 1.3 °C and values did not fluctuate widely, with a minimum of 19.9 °C in
47
48
49 235 April and a maximum of 25.7 °C in September. The pH, salinity, and conductivity did not
50
51
52 236 fluctuate widely either and were 7.9 ± 0.3 , 34.6 ± 0.5 and 52.5 ± 0.7 ms.cm⁻¹ respectively.
53
54
55 237 Temperature, pH, salinity and conductivity were similar among rearing tanks; the values were
56
57
58 238 thus averaged. Average temperature was 19.1 ± 1.0 °C, with a minimum of 17.9 °C in April and a
59
60 239 maximum of 21.1 °C in August. The pH, salinity, and conductivity did not vary widely and were
61

1
2
3
4 240 7.5 ± 0.3 , 34.4 ± 0.5 and 52.3 ± 0.5 ms.cm⁻¹ respectively. During the sampling campaign, batches
5
6 241 of fish were removed and replaced once from Tank 1 and once from Tank 2, due to their growing
7
8
9 242 size. The average DO concentration in the rearing tanks was maintained at 6.05 ± 1.2 mg.L⁻¹. The
10
11 243 mortality rate was low throughout the sampling campaign and no vibriosis outbreak was recorded
12
13
14 244 in the three chosen rearing tanks.

16 245 **Identification of presumptive Vibrionaceae isolates cultured on TCBS agar**

17
18 246 Across all the compartments, from April to October 2018, 1009 isolates were chosen on the basis
19
20
21 247 of morphological traits on TCBS agar, after incubation at 37 °C for 24 h. Overall, 80.4%
22
23 248 (811/1009) of the isolates were collected from the three rearing tanks: 44.2% (446/1009)
24
25
26 249 originated from rearing water and 36.2% (365/1009) originated from biofilms. Only 11.5%
27
28 250 (116/1009) and 8.1% (82/1009) were collected from the hot- and cold-water inlets, respectively
29
30
31 251 (Fig. 2.a).

32
33 252 These isolates were then identified using MALDI-TOF MS with the Bruker BioTyper ver.9.0.0.0
34
35 253 database supplemented with our in-house *Vibrio* Luvibase. This analysis resulted in the
36
37
38 254 assignment of 91.2% (920/1009) of the isolates at the species level (log-score ≥ 2.0) and 8.8%
39
40 255 (89/1009) at the genus level only ($1.7 \leq \text{log-score} < 2.0$) (Fig. 2.b). Among the 920 isolates
41
42
43 256 identified at the species level, 75.7% belonged to genus *Vibrio* and 24.3% to *Photobacterium*.

44
45 257 Within the *Photobacterium* genus, only *P. damsela* was isolated. Within the *Vibrio* genus, the
46
47
48 258 isolates were categorized into four clades, the Harveyi clade (97.3%), the Splendidus clade
49
50 259 (2.0%), the Orientalis clade (0.6%) and the Coralliilyticus clade (0.1%). The Harveyi clade
51
52
53 260 consisted of isolates assigned to *V. alginolyticus*, *V. harveyi*, *V. owensii*, *V. rotiferianus*,
54
55 261 *V. jasicida*, *V. mytili*, *V. campbellii* and *V. parahaemolyticus*. The Splendidus clade consisted of
56
57 262 isolates identified as *V. pelagius* and *V. fortis*. The Orientalis clade consisted of isolates assigned
58
59
60 263 to *V. brasiliensis*, and *V. sinaloensis*. The Coralliilyticus clade consisted of one isolate assigned
61

1
2
3
4 264 to *V. coralliilyticus*. Overall, the most frequently identified species were *V. alginolyticus* (24.8%),
5
6 265 *P. damsela* (24.3%), *V. harveyi* (24.2%) and *V. owensii* (15.8%) (Fig. 2.b). All other species
7
8
9 266 were very scarce.

10
11 267 The relative isolated and identified bacterial diversity was roughly similar between the
12
13
14 268 compartments and sample types (Fig. 2.c). Nevertheless, none of the species were isolated
15
16 269 systematically throughout the sampling campaign (Fig. 2.d). *Vibrio alginolyticus* was recorded
17
18 270 from May to October in the hot-water inlet, water tanks and biofilm, but was not recorded in June
19
20
21 271 and October in the cold-water inlet. The presumed pathogen *V. harveyi* was recorded from May
22
23 272 to September in all compartments. *Photobacterium damsela* was recorded from July to October
24
25
26 273 in the hot- and cold-water inlets and from May to October in the water tanks and biofilms.
27
28 274 Finally, *V. owensii* was recorded from May to October in water tanks and biofilms, but recorded
29
30
31 275 from July to September in the hot-water inlet, and in July and August only in the cold-water inlet.
32

33 276 **Quantification of presumptive culturable Vibrionaceae isolates**

34
35 277 Presumptive culturable Vibrionaceae CFUs grown on TCBS agar, after incubation at 37 °C for 24
36
37
38 278 h, were enumerated and their abundance in each compartment and each sample was estimated.
39
40 279 According to the statistical analysis, the average abundance of presumptive culturable
41
42
43 280 Vibrionaceae differed significantly between the cold- and hot-water inlets and water from rearing
44
45 281 tanks (each p-value < 0.05). In contrast, there were no significant differences between the average
46
47
48 282 abundances of the three rearing tanks, for either the water or biofilm samples (each p-value >
49
50 283 0.05). Consequently, for the following analyses, for each sampling date, the average abundances
51
52
53 284 detected in the three rearing tanks were pooled.

54
55 285 In the cold-water inlet, the presumptive detected culturable Vibrionaceae, ranged from 3.37×10^2
56
57 286 to 4.85×10^3 CFU.mL⁻¹ (Fig. 3.a). The maximum abundance was detected from July to September,
58
59
60 287 when the temperature recorded in this compartment was the highest, 19.8 ± 1 °C. A peak in
61

1
2
3
4 288 abundance (3.37×10^2 CFU.mL⁻¹) was observed in late May at a temperature of 15.0 °C, and water
5
6 289 temperature continued to increase slightly (average +0.7 °C each week from April to June). No
7
8
9 290 bacteria were detected in October and April.

10
11 291 In the hot-water inlet, the presumptive detected culturable Vibrionaceae followed more or less the
12
13 same pattern, ranging from 3.11×10^2 to 6.71×10^4 CFU.mL⁻¹ in abundance. Maximum abundance
14 292
15
16 293 was detected in late June when the temperature reached 24 °C. Then, abundance tended to
17
18 decrease slightly until mid-October, when a peak of 5.99×10^2 CFU.mL⁻¹ was detected at a
19 294
20
21 295 temperature of 24.9 °C. As in the cold-water inlet, a peak in abundance (6.43×10^3 CFU.mL⁻¹)
22
23 296 was detected in late May at a water temperature of 24.7 °C in this compartment.

24
25
26 297 In the rearing tanks, the presumptive culturable Vibrionaceae detected in water ranged from
27
28 298 2.28×10^3 to 1.74×10^5 CFU.mL⁻¹. Presumptive detected culturable Vibrionaceae were enumerated
29
30
31 299 from mid-April until the end of the study. The abundance tended to increase slowly and
32
33 300 constantly with an average + 0.20 log per week until August, the warmest month of summer with
34
35 the maximum recorded temperature (21.7 °C). Subsequently, abundance decreased slightly in
36 301
37
38 302 September, and hit a peak of 2.50×10^4 CFU.mL⁻¹ in mid-October, when the temperature jumped
39
40 303 back to 19.1 °C. The presumptive attached culturable Vibrionaceae detected in biofilms ranged
41
42 from 2.51×10^5 to 2.03×10^7 CFU.cm⁻². Presumptive attached culturable Vibrionaceae were
43 304
44
45 305 enumerated from mid-May until the end of the study. As observed in the water samples,
46
47 abundance tended to increase slowly and constantly with an average + 0.27 log per week until
48 306
49
50 307 August, then decreased slightly. Interestingly, a peak in the abundance of 2.29×10^6 CFU.cm⁻²
51
52 occurred with a peak in temperature in mid-October, similar to the pattern for the water samples
53 308
54
55 309 and the hot-water inlet.

56
57 310 **Quantification of *V. harveyi* using real-time PCR**
58
59
60
61
62
63
64
65

1
2
3
4 311 Real-time PCR was used to estimate the abundance of *V. harveyi* detected in each compartment
5
6 312 and each sample. According to the statistical analysis, the average abundance of presumptive
7
8
9 313 culturable Vibrionaceae detected in the water from the cold- and hot-water inlets and rearing
10
11 314 tanks were significantly different (each p-value < 0.05). In contrast, there were no significant
12
13
14 315 differences between the average abundances observed in the three rearing tanks, for either the
15
16 316 water or biofilm samples (each p-value > 0.05). Consequently, for each sampling time, the
17
18
19 317 average abundances detected in the three rearing tanks were pooled together.
20
21 318 Overall, the average estimated quantity of *V. harveyi* was higher in hot-water inlet than in the
22
23
24 319 cold-water inlet. In the cold-water inlet, abundance of detected *V. harveyi*, ranged from 1.35 to
25
26 320 8.57 GE.mL⁻¹ (Fig. 3.a). A few peaks were detected in late May, mid-June, early July, and mid-
27
28 321 September.
29
30
31 322 Successive screenings for *V. harveyi* over 5 weeks demonstrated a rapid increase in abundance
32
33 323 from mid-July to mid-August, when temperatures reached their highest values.
34
35
36 324 In the hot-water inlet, abundance of detected *V. harveyi* ranged from 4.62 to 2.11×10² GE.mL⁻¹.
37
38 325 *V. harveyi* was first detected in mid-May when the temperature reached 25.1 °C for the first time
39
40
41 326 in the year. Abundance increased slowly (average + 0.11 log per week) until early June when the
42
43 327 concentration reached 1.41×10² GE.mL⁻¹, and then decreased. The average abundance detected in
44
45 328 late June and mid-July was relatively high, with abundance decreasing slightly thereafter
46
47
48 329 (average + 0.20 log per week), dropping to an absence of detection until a last peak of 4.62 of
49
50 330 GE.mL⁻¹ in mid-October when the temperature reached 24.9 °C.
51
52
53 331 In the rearing tanks, detected *V. harveyi* abundance ranged from 3.72 to 9.51×10¹ GE.mL⁻¹ (Fig.
54
55 332 3.a). *V. harveyi* was first detected in April when the temperature reached 18.0 °C. The maximal
56
57
58 333 abundances were recorded in mid-May (9.51×10¹ GE.mL⁻¹), mid-July (7.88×10¹ GE.mL⁻¹), and
59
60 334 mid-October (7.65×10¹ GE.mL⁻¹), when the rearing water temperatures reached 19.0, 19.6 and
61
62
63
64
65

1
2
3
4 335 19.1°C, respectively. Nevertheless, *V. harveyi* was detected in April when no *Vibrio* bacteria
5
6 336 were recorded in the cold- and hot-water inlets. The abundance of attached *V. harveyi* detected in
7
8
9 337 biofilms ranged from 1.45×10^3 to 3.25×10^3 GE.cm⁻² (Fig. 3.b). Attached *V. harveyi* were
10
11 338 enumerated from mid-May (1.64×10^3 GE.cm⁻²) until mid-October (2.43×10^3 GE.cm⁻²), with no
12
13
14 339 detection in early September or in early October.

16 340 **Influence of environmental factors on cultivable Vibrionaceae and *V. harveyi* dynamics**

17
18 341 Statistical analysis highlighted correlations between water temperature and the abundance of
19
20
21 342 presumptive Vibrionaceae in the cold-water inlet (p-value=0.0065). A positive correlation was
22
23 343 detected between water temperature (p-value=0.0005) and the abundance of presumptive
24
25
26 344 Vibrionaceae in biofilms.

27
28 345 Moreover, statistical analyses highlighted a positive correlation between water temperature and
29
30
31 346 the abundance of *V. harveyi* in the cold-water inlet (p-value=0.0186) and in water from rearing
32
33 347 tanks (p-value=0.0198). A positive correlation was also detected between water temperature and
34
35
36 348 the abundance of *V. harveyi* in biofilms (p-value<0.0001).

38 349 **4. Discussion**

39
40 350 The seabass aquaculture sector is being challenged by the emergence of recurring vibriosis
41
42
43 351 outbreaks caused by *V. harveyi* (Vendramin *et al.*, 2016). The prevalence of the pathogen in fish
44
45 352 is highly correlated with the abundance of the pathogen in the surrounding environment (Kim and
46
47
48 353 Lee, 2017). Although the contamination of fish is not the only factor that can exacerbate the
49
50 354 development of the disease, the abundance of *V. harveyi*, in rearing water and biofilm may be an
51
52
53 355 accurate indicator of the risk of vibriosis outbreaks. Thus, deeper understanding of the dynamics
54
55 356 and spatial patterns of *V. harveyi* in the aquaculture environment is needed.

56
57 357 In this study, we assessed the temporal and spatial dynamics of Vibrionaceae, and the
58
59
60 358 presumptive pathogen *V. harveyi* in particular, from April to October 2018 on a fish farm located

1
2
3
4 359 in Northern France. Three rearing tanks were chosen from a facility frequently affected by
5
6 360 vibriosis. In particular, vibriosis outbreaks, mostly caused by *V. harveyi*, were recorded in 2017
7
8
9 361 on this fish farm. Furthermore, a few strains of *V. jasicida*, *V. rotiferianus*, *V. owensii*,
10
11 362 *V. tasmaniensis*, and *V. gigantis* were also isolated from the spleens of moribund seabass
12
13
14 363 (Mougin *et al.*, 2020a; Mougin *et al.*, 2020b). In 2018, vibriosis outbreaks caused by
15
16 364 *V. anguillarum* were recorded (Appendix B). According to the aquaculture facility operators,
17
18
19 365 these latter outbreaks were due to a delay in vaccine delivery and were quickly and successfully
20
21 366 managed. Some strains of *V. harveyi* were isolated from few moribund fish (Appendix B), but no
22
23 367 *V. harveyi* vibriosis outbreak has been recorded on the fish farm, particularly in the three rearing
24
25
26 368 tanks used during our monitoring study.

27
28 369 A selective culture method was used during the survey (TCBS for 24 h at 37 °C) in order to
29
30
31 370 mostly isolate Vibrionaceae belonging to the Harveyi clade, which includes the main pathogens
32
33 371 for seabass. We are aware that not all Vibrionaceae are able to grow under these conditions and
34
35
36 372 consequently, the diversity and the abundance of the presumptive Vibrionaceae detected could
37
38 373 have been underestimated. Among potentially pathogenic bacteria for seabass, *P. damsela*,
39
40 374 *V. alginolyticus*, *V. owensii*, *V. rotiferianus*, and *V. harveyi* were isolated during our sampling
41
42
43 375 campaign. The species *P. damsela* is divided into two subspecies with clinical and
44
45 376 epidemiological differences, both affecting seabass (Essam *et al.*, 2016; Vázquez and Muñoz-
46
47
48 377 Cueto, 2014). *P. damsela* subsp. *piscicida* (formerly *Pasteurella piscicida*) is known as the
49
50 378 causative agent of a severe aquatic disease called pasteurellosis, and *P. damsela* subsp. *damsela*
51
52
53 379 (formerly *Vibrio damsela*) is responsible for photobacteriosis commonly defined as sporadic
54
55 380 pathologies (Buchmann *et al.*, 2009). Nonetheless, this latter disease had been recognized as an
56
57
58 381 epizootic agent, transmitted by infected fish, and may cause public health problems (Rivas *et*
59
60 382 *al.*, 2013). In our study, presumably, only subspecies *damsela* was recorded, but the MALDI

1
2
3
4 383 BioTyper database cannot discriminate between these two subspecies (Pérez-Sancho *et al.*, 2016).
5
6 384 Given that no mortalities caused by *P. damsela* have been recorded, no further analysis was
7
8
9 385 pursued. In the *Vibrio* genus, the Harveyi clade — especially *V. alginolyticus*, *V. harveyi*
10
11 386 *V. owensii*, and *V. rotiferianus* were the most frequently isolated species on the fish farm.
12
13
14 387 Importantly, these species have already been isolated from moribund seabass and are considered
15
16 388 as potential pathogens on the farm. Nevertheless, *V. harveyi* remains the main pathogen
17
18
19 389 responsible for recurrent vibriosis outbreaks.
20
21 390 Interestingly, even though no vibriosis outbreak was recorded, isolates of *V. harveyi* were
22
23 391 detected in the rearing tanks from water and biofilm, throughout practically the whole sampling
24
25
26 392 campaign. The development of vibriosis occurs due to disruptions between host-pathogen-
27
28 393 environment interactions (Snieszko, 1974; Toranzo *et al.*, 2005). Thus, many factors, such as the
29
30
31 394 susceptibility and physiological state of the host, the pathogenicity and virulence of the pathogen,
32
33 395 and the influence of environmental stress conditions, must be considered. At this fish farm, the
34
35
36 396 absence of vibriosis outbreaks was attributed to the efficiency of the novel annual autogenous
37
38 397 vaccine. However, in practical terms, this type of vaccine sometimes appears less efficient from
39
40
41 398 one year to the next and must be regularly renewed, incurring high costs. Another hypothesis is
42
43 399 that the strains of *V. harveyi* present on the farm during 2018 were not highly virulent. Our study
44
45 400 focused on the abundance of all *V. harveyi* strains without distinguishing pathogens from non-
46
47
48 401 pathogens. There is thus a possibility that the pathogenic isolates detected and collected in 2018
49
50 402 are scarce.
51
52
53 403 Environmental factors may also have an impact on the development of the disease. The
54
55 404 correlation between the abundance of *V. harveyi* and water temperature indicates that the risk of
56
57
58 405 vibriosis outbreaks may vary throughout the year. In the natural marine environment, previous
59
60 406 studies have highlighted that the abundance of *Vibrio* spp. may follow seasonal variation in

1
2
3
4 407 temperate regions (Johnson *et al.*, 2012; Martinez-Urtaza *et al.*, 2008). Water temperature and
5
6 408 salinity are considered as the most effective predictors of temporal and spatial distributions.
7
8
9 409 However, in a semi-closed aquaculture system, even though tanks are supplied with natural
10
11 410 marine seawater, water quality is extensively monitored and maintained as constant as possible.
12
13
14 411 Consequently, in our study, the environmental parameters monitored in rearing tanks (i.e. pH,
15
16 412 salinity, conductivity, and DO) did not vary widely. Water temperature was generally constant,
17
18
19 413 but the month of June and July showed temperatures above 20 °C. Increased prevalence of
20
21 414 *V. harveyi* in oysters (*Crassostrea gigas* and *Crassostrea virginica*) was detected at temperatures
22
23 415 above 20 °C (Pujalte *et al.*, 1999). Moreover, a previous study (Pujalte *et al.* (2003) reported
24
25 416 increased prevalence of *V. harveyi* in European seabass and gilthead seabream during warm
26
27
28 417 months. Consequently, the warmer months of summer may represent a higher risk for vibriosis
29
30
31 418 outbreaks. Furthermore, temperature may not only influence the prevalence of the pathogen, but
32
33 419 also the virulence and the physiological state of the host, disturbing the host-pathogen
34
35 420 relationship (Paillard *et al.*, 2004; Travers *et al.*, 2009). In the years ahead, the risk of vibriosis
36
37
38 421 may increase with the rise of water temperature, due to global warming (Travers *et al.*, 2009;
39
40 422 Vezzulli *et al.*, 2015).
41
42
43 423 In the rearing tanks, the abundance of presumptive cultivable Vibrionaceae appeared to follow a
44
45 424 seasonal pattern, with the highest values in August and the lowest in April. On the contrary, there
46
47
48 425 was no clear seasonal pattern in the variation of *V. harveyi* abundance. This difference can be
49
50 426 attributed to the divergence between monitoring methods. The real-time PCR method is based on
51
52
53 427 a DNA target and provides an estimation of the quantity of cultivable bacteria, viable but not
54
55 428 cultivable (VBNC) bacteria, and residual DNA released by dead bacteria. Quantification by plate
56
57
58 429 count on selective media provides an estimation of the quantity of cultivable bacteria only, and
59
60 430 does not allow recovery of VBNC bacteria. However, the quantification of VBNC bacteria in the

1
2
3
4 431 rearing tanks is of significant importance. In particular, VBNC *V. harveyi* may conserve their
5
6 432 pathogenic potential and infect a host when they break dormancy under favorable environmental
7
8
9 433 conditions (Sun *et al.*, 2008). Moreover, VBNC bacteria are more resistant to antibiotics than
10
11 434 cultivable bacteria (Ayrapetyan *et al.*, 2015). The major drawback of monitoring *V. harveyi*
12
13
14 435 abundance using real-time PCR is the quantification of residual DNA of dead bacteria. A suitable
15
16 436 solution, which could be used in a future study, is the use of propidium monoazide (PMA) real-
17
18
19 437 time PCR (Mougin *et al.*, 2019; Nocker *et al.*, 2006). This method allows the estimation of both
20
21 438 cultivable and VBNC bacteria, which may represent potential fish pathogens and zoonotic
22
23
24 439 sources.

25
26 440 Overall, the trend in the abundance of *V. harveyi* in the water of rearing tanks may follow the
27
28 441 trend recorded in the water inlets. The water inlets may thus represent a source of contamination
29
30
31 442 for the rearing tanks. Moreover, our work highlighted the presence of Vibrionaceae and
32
33 443 *V. harveyi* in biofilms on the concrete walls of the rearing tanks. In particular, biofilms may be a
34
35
36 444 reservoir of potentially pathogenic bacteria in aquaculture facilities (Bourne *et al.*, 2006). Their
37
38 445 relative resistance to antibiotics and sanitizers make them more threatening to the aquaculture
39
40
41 446 sector (Karunasagar *et al.*, 1996). In our study, attached cultivable Vibrionaceae were detected
42
43 447 from day 42 of the sampling campaign and attached *V. harveyi* was detected from day 56. This
44
45 448 delay in detection can be attributed to high water flow and fish movements in the rearing tanks. A
46
47
48 449 better understanding of biofilm dynamics may help develop non-toxic anti-biofilm compounds or
49
50 450 preventive anti-biofilm control measures. Quorum-sensing interfering agents hold promise for
51
52
53 451 developing anti-biofilm therapies (Arunkumar *et al.*, 2020; Defoirdt, 2017). Previous studies have
54
55 452 reported that the *Piper betle* ethyl acetate extract (PBE) or citrus limonoids may have anti-biofilm
56
57
58 453 properties against *V. harveyi* (Srinivasan *et al.*, 2017; Vikram *et al.*, 2011). Their quorum-sensing
59
60 454 interfering properties can be tested on the pathogenic isolates identified and collected from

1
2
3
4 455 biofilms in this study. This approach may be the key to designing new control measures that can
5
6 456 then be integrated in a preventive holistic strategy including hosts, pathogens, and the
7
8
9 457 environment to control vibriosis.

11 458 **5. Conclusion**

13
14 459 In conclusion, the abundance of cultivable Vibrionaceae increased in the rearing tanks during the
15
16 460 warm summer months. These bacteria may come from the water inlets, but biofilms may also be
17
18
19 461 a reservoir for potential pathogenic bacteria for seabass. Importantly, several pathogenic bacterial
20
21 462 species were isolated from rearing water and biofilm samples: *P. damsela*, *V. alginolyticus*,
22
23 463 *V. harveyi*, *V. owensii* and *V. rotiferianus*. Overall, *V. harveyi* is considered as the main pathogen
24
25
26 464 on the fish farm and its constant presence represents a risk for vibriosis outbreaks. The correlation
27
28 465 between its abundance and water temperature suggests that this risk may increase with the rise of
29
30
31 466 water temperature, caused by global warming. Moreover, the probability of vibriosis outbreaks
32
33 467 may be increased by the presence of *V. harveyi* in biofilms, which may facilitate resistance
34
35
36 468 against antibiotics, water sanitizers, and environmental fluctuations.

37
38 469 Future studies must now assess the pathogenicity of virulence of the isolates collected in this
39
40
41 470 study. The pathogenic strains isolated from biofilms can be then used to study biofilm dynamics
42
43 471 and to design and develop anti-biofilm control measures. Because *V. harveyi* affects not only
44
45 472 seabass, but also a wide range of crustaceans, mollusks, and fishes, these measures can be then
46
47
48 473 adapted to other aquaculture facilities.

49
50 474

53 475 **6. Acknowledgements**

54
55
56 476 Julia Mougin would like to thank the Hauts-de-France Regional Council for its financial support
57
58 477 of her PhD studies. This work was funded by the French government and the Hauts-de-France
59
60
61

1
2
3
4 478 Regional Council as part of the CPER 2014-2020 MARCO project. The authors also thank
5
6 479 Aquanord-Ictus for contributing to the LUVIBAR project, especially Guillaume Tielie, Anabelle
7
8
9 480 Duhamel and Céline Doyen. The authors are also grateful to the REALCAT platform funded by
10
11 481 the French National Research Agency (ANR) as part of the ‘Investments for the Future’
12
13
14 482 expenditure scheme (ANR-11-EQPX-0037), as well as to Egon Heuson for helpful assistance.
15
16 483 **7. References**
17
18
19 484 Antajan, E., Devreker, D., Loots, C., Rocroy, M., Alizier, S., Ruellet, T., 2019. Surveillance
20 485 écologique du site de production électronucléaire de Gravelines Novembre 2017–Octobre
21 486 2018.
22 487 Arunkumar, M., LewisOscar, F., Thajuddin, N., Pugazhendhi, A., Nithya, C., 2020. In vitro and
23 488 in vivo biofilm forming *Vibrio* sp: A significant threat in aquaculture. Process Biochem.
24 489 10.1016/j.procbio.2020.04.029
25
26 490 Austin, B., 2010. Vibrios as causal agents of zoonoses. Vet. Microbiol. 140, 310-317.
27 491 10.1016/j.vetmic.2009.03.015
28 492 Austin, B., Zhang, X.H., 2006. *Vibrio harveyi*: a significant pathogen of marine vertebrates and
29 493 invertebrates. Lett. Appl. Microbiol. 43, 119-124. 10.1111/j.1472-765X.2006.01989.x
30
31 494 Ayrapetyan, M., Williams, T.C., Oliver, J.D., 2015. Bridging the gap between viable but non-
32 495 culturable and antibiotic persistent bacteria. Trends Microbiol. 23, 7-13.
33 496 10.1016/j.tim.2014.09.004
34 497 Bostock, J., Lane, A., Hough, C., Yamamoto, K., 2016. An assessment of the economic
35 498 contribution of EU aquaculture production and the influence of policies for its sustainable
36 499 development. Aquacult. Int. 24, 699-733. 10.1007/s10499-016-9992-1
37
38 500 Bourne, D.G., Høj, L., Webster, N.S., Swan, J., Hall, M.R., 2006. Biofilm development within a
39 501 larval rearing tank of the tropical rock lobster, *Panulirus ornatus*. Aquaculture. 260, 27-
40 502 38. 10.1016/j.aquaculture.2006.06.023
41
42 503 Buchmann, K., Bresciani, J., Pedersen, K., Ariel, E., Dalsgaard, I., Madsen, L., 2009. Fish
43 504 diseases-an introduction. Biofolia.
44 505 Dadar, M., Dhama, K., Vakharia, V.N., Hoseinifar, S.H., Karthik, K., Tiwari, R., Khandia, R.,
45 506 Munjal, A., Salgado-Miranda, C., Joshi, S.K., 2017. Advances in aquaculture vaccines
46 507 against fish pathogens: global status and current trends. Rev. Fish. Sci. Aqualc. 25, 184-
47 508 217. 10.1080/23308249.2016.1261277
48
49 509 Defoirdt, T., 2017. Quorum-Sensing systems as targets for antivirulence therapy. Trends
50 510 Microbiol., 1-16. 10.1016/j.tim.2017.10.005
51
52 511 Essam, H., Abdellrazeq, G., Tayel, S., Torkey, H., Fadel, A., 2016. Pathogenesis of
53 512 *Photobacterium damsela* subspecies infections in sea bass and sea bream. Microb.
54 513 Pathog. 99, 41-50. 10.1016/j.micpath.2016.08.003
55 514 FAO, 2018. The State of World Fisheries and Aquaculture 2018- Meeting the sustainable
56 515 development goals. Licence: CC BY-NC-SA 3.0 IGO.
57
58 516 Ghittino, C., Latini, M., Agnetti, F., Panzieri, C., Lauro, L., Ciappelloni, R., Petracca, G., 2003.
59 517 Emerging pathologies in aquaculture: effects on production and food safety. Vet. Res.
60 518 Commun. 27, 471-479.
61
62
63
64
65

- 1
2
3
4 519 Johnson, C.N., Bowers, J.C., Griffitt, K.J., Molina, V., Clostio, R.W., Pei, S., Laws, E.,
5 520 Paranjpye, R.N., Strom, M.S., Chen, A., 2012. Ecology of *Vibrio parahaemolyticus* and
6 521 *Vibrio vulnificus* in the coastal and estuarine waters of Louisiana, Maryland, Mississippi,
7 522 and Washington (United States). *Appl. Environ. Microbiol.* 78, 7249-7257.
8 523 10.1128/AEM.01296-12
- 10 524 Kahla-Nakbi, A.B., Chaieb, K., Besbes, A., Zmantar, T., Bakhrouf, A., 2006. Virulence and
11 525 enterobacterial repetitive intergenic consensus PCR of *Vibrio alginolyticus* strains isolated
12 526 from Tunisian cultured gilthead sea bream and sea bass outbreaks. *Vet. Microbiol.* 117,
13 527 321-327. 10.1016/j.vetmic.2006.06.012
- 15 528 Karunasagar, I., Otta, S., Karunasagar, I., 1996. Biofilm formation by *Vibrio harveyi* on surfaces.
16 529 *Aquaculture.* 140, 241-245. 10.1016/0044-8486(95)01180-3
- 17 530 Khouadja, S., Lamari, F., Bakhrouf, A., 2013. Characterization of *Vibrio parahaemolyticus*
18 531 isolated from farmed sea bass (*Dicentrarchus labrax*) during disease outbreaks. *Int.*
19 532 *Aquat. Res.* 5, 13.
- 21 533 Kim, J.Y., Lee, J.-L., 2017. Correlation of Total Bacterial and *Vibrio spp.* Populations between
22 534 Fish and Water in the Aquaculture System. *Front. Mar. Sci.* . 4, 147.
23 535 10.3389/fmars.2017.00147
- 25 536 Korun, J., Timur, G., 2008. Marine vibrios associated with diseased sea bass (*Dicentrarchus*
26 537 *labrax*) in Turkey. *J. FisheriesSciences.com.* 2, 66-76. 10.3153/jfsc.com.2008007
- 27 538 Le-Breton, A., 1999. Mediterranean finfish pathologies: present status and new developments in
28 539 prophylactic methods. *Bull. Eur. Ass. Fish Pathol.* . 19, 250-253.
- 30 540 Martinez-Urtaza, J., Lozano-Leon, A., Varela-Pet, J., Trinanes, J., Pazos, Y., Garcia-Martin, O.,
31 541 2008. Environmental determinants of the occurrence and distribution of *Vibrio*
32 542 *parahaemolyticus* in the rias of Galicia, Spain. *Appl. Environ. Microbiol.* 74, 265-274.
33 543 10.1128/AEM.01307-07
- 34 544 Maulvault, A.L., Barbosa, V., Alves, R., Anacleto, P., Camacho, C., Cunha, S., Fernandes, J.O.,
35 545 Ferreira, P.P., Rosa, R., Marques, A., 2018. Integrated multi-biomarker responses of
36 546 juvenile seabass to diclofenac, warming and acidification co-exposure. *Aquat. Toxicol.*
37 547 202, 65-79. 10.1016/j.aquatox.2018.06.016
- 39 548 Montánchez, I., Kaberdin, V.R., 2019. *Vibrio harveyi*: A brief survey of general characteristics
40 549 and recent epidemiological traits associated with climate change. *Mar. Environ. Res.*,
41 550 104850. 10.1016/j.marenvres.2019.104850
- 43 551 Mougín, J., Roquigny, R., Travers, M.-A., Grard, T., Bonnin-Jusserand, M., Le Bris, C., 2020a.
44 552 Development of a *mreB*-targeted real-time PCR method for the quantitative detection of
45 553 *Vibrio harveyi* in seawater and biofilm from aquaculture systems. *Aquaculture*, 735337.
46 554 10.1016/j.aquaculture.2020.735337
- 48 555 Mougín, J., Flahaut, C., Roquigny, R., Bonnin-Jusserand, M., Grard, T., Le Bris, C., 2020b.
49 556 Rapid identification of *Vibrio* species of the the Harveyi clade using MALDI-TOF MS
50 557 profiling with main spectral profile database implemented with an in-house database:
51 558 Luvibase. *Front. Microbiol.* 11, 2494.
- 53 559 Mougín, J., Copin, S., Bojolly, D., Raguénét, V., Robert-Pillot, A., Quilici, M.-L., Midelet-
54 560 Bourdin, G., Grard, T., Bonnin-Jusserand, M., 2019. Adhesion to stainless steel surfaces
55 561 and detection of viable but non cultivable cells of *Vibrio parahaemolyticus* and *Vibrio*
56 562 *cholerae* isolated from shrimps in seafood processing environments: Stayin' alive? *Food*
57 563 *Control.* 102, 122-130. 10.1016/j.foodcont.2019.03.024
- 59 564 Muniesa, A., Basurco, B., Aguilera, C., Furones, D., Reverté, C., Sanjuan- Vilaplana, A., Jansen,
60 565 M.D., Brun, E., Tavornpanich, S., 2020. Mapping the knowledge of the main diseases

1
2
3
4 566 affecting sea bass and sea bream in Mediterranean. *Transboundary Emerging Dis.*
5 567 10.1111/tbed.13482
6
7 568 Nocker, A., Cheung, C.-Y., Camper, A.K., 2006. Comparison of propidium monoazide with
8 569 ethidium monoazide for differentiation of live vs. dead bacteria by selective removal of
9 570 DNA from dead cells. *J. Microbiol. Methods.* 67, 310-320. 10.1016/j.mimet.2006.04.015
10 571 O'Toole, R., Von Hofsten, J., Rosqvist, R., Olsson, P.-E., Wolf-Watz, H., 2004. Visualisation of
11 572 zebrafish infection by GFP-labelled *Vibrio anguillarum*. *Microb. Pathog.* 37, 41-46.
12 573 10.1016/j.micpath.2004.03.001
13
14 574 Paillard, C., Allam, B., Oubella, R., 2004. Effect of temperature on defense parameters in Manila
15 575 clam *Ruditapes philippinarum* challenged with *Vibrio tapetis*. *Dis. Aquat. Org.* 59, 249-
16 576 262. 10.3354/dao059249
17
18 577 Pérez-Sancho, M., Ana, I.V., Awad, M., Kostrzewa, M., Domínguez, L., Fernández-Garayzábal,
19 578 J.F., 2016. Differentiation of *Photobacterium damsela* subspecies using matrix-assisted
20 579 laser-desorption/ionization time-of-flight mass spectrometry (MALDI-TOF MS) in fish
21 580 isolates. *Aquaculture.* 464, 159-164. 10.1016/j.aquaculture.2016.06.024
22
23 581 Pinheiro, J., Bates, D., DebRoy, S., Sarkar, D., Team, R.C., 2018. nlme: linear and nonlinear
24 582 mixed effects models. R package version 3.1-137. Vienna, Austria: R Foundation.
25 583 Prayitno, S.B., Latchford, J., 1995. Experimental infections of crustaceans with luminous bacteria
26 584 related to *Photobacterium* and *Vibrio*. Effect of salinity and pH on infectiosity.
27 585 *Aquaculture.* 132, 105-112. 10.1016/0044-8486(94)00374-W
28
29 586 Pujalte, M., Sitjà-Bobadilla, A., Macián, M., Belloch, C., Alvarez-Pellitero, P., Pérez-Sánchez, J.,
30 587 Uruburu, F., Garay, E., 2003. Virulence and molecular typing of *Vibrio harveyi* strains
31 588 isolated from cultured dentex, gilthead sea bream and European sea bass. *Syst. Appl.*
32 589 *Microbiol.* 26, 284-292. 10.1078/072320203322346146
33
34 590 Pujalte, M.J., Ortigosa, M., Macián, M.C., Garay, E., 1999. Aerobic and facultative anaerobic
35 591 heterotrophic bacteria associated to Mediterranean oysters and seawater. *Int. Microbiol.* 2,
36 592 259-266.
37 593 R Core Team, 2013. R: A language and environment for statistical computing.
38 594 Rivas, A.J., Lemos, M.L., Osorio, C.R., 2013. *Photobacterium damsela* subsp. *damsela*, a
39 595 bacterium pathogenic for marine animals and humans. *Front. Microbiol.* 4, 283.
40 596 10.3389/fmicb.2013.00283
41
42 597 Snieszko, S., 1974. The effects of environmental stress on outbreaks of infectious diseases of
43 598 fishes. *J. Fish Biol.* 6, 197-208. 10.1111/j.1095-8649.1974.tb04537.x
44 599 Srinivasan, R., Santhakumari, S., Ravi, A.V., 2017. In vitro antibiofilm efficacy of Piper betle
45 600 against quorum sensing mediated biofilm formation of luminescent *Vibrio harveyi*.
46 601 *Microb. Pathog.* 110, 232-239. 10.1016/j.micpath.2017.07.001
47
48 602 Sun, F., Chen, J., Zhong, L., Zhang, X.-h., Wang, R., Guo, Q., Dong, Y., 2008. Characterization
49 603 and virulence retention of viable but nonculturable *Vibrio harveyi*. *FEMS Microbiol.*
50 604 *Ecol.* 64, 37-44.
51
52 605 Toranzo, A.E., Magariños, B., Romalde, J.L., 2005. A review of the main bacterial fish diseases
53 606 in mariculture systems. *Aquaculture.* 246, 37-61. 10.1016/j.aquaculture.2005.01.002
54 607 Travers, M.A., Basuyaux, O., Le Goïc, N., Huchette, S., Nicolas, J.L., Koken, M., Paillard, C.,
55 608 2009. Influence of temperature and spawning effort on *Haliotis tuberculata* mortalities
56 609 caused by *Vibrio harveyi*: an example of emerging vibriosis linked to global warming.
57 610 *Glob. Chang. Biol.* 15, 1365-1376. 10.1111/j.1365-2486.2008.01764.x
58
59 611 Vázquez, F.J.S., Muñoz-Cueto, J.A., 2014. *Biology of European sea bass*. CRC Press.

1
2
3
4 612 Vazzana, M., Cammarata, M., Cooper, E., Parrinello, N., 2002. Confinement stress in sea bass
5 613 (*Dicentrarchus labrax*) depresses peritoneal leukocyte cytotoxicity. *Aquaculture*. 210,
6 614 231-243. 10.1016/S0044-8486(01)00818-3
7
8 615 Vendramin, N., Zrncic, S., Padrós, F., Oraic, D., Le Breton, A., Zarza, C., Olesen, N.J., 2016.
9 616 Fish health in Mediterranean Aquaculture, past mistakes and future challenges. *Bull. Eur.*
10 617 *Assoc. Fish Pathol.* 36, 38-45.
11 618 Vezzulli, L., Pezzati, E., Brettar, I., Höfle, M., Pruzzo, C., 2015. Effects of Global Warming on
12 619 *Vibrio* Ecology. *Microbiol. Spectrum*. 10.1128/microbiolspec.VE-0004-2014
13 620 Vikram, A., Jesudhasan, P.R., Jayaprakasha, G., Pillai, S.D., Patil, B.S., 2011. Citrus limonoids
14 621 interfere with *Vibrio harveyi* cell–cell signalling and biofilm formation by modulating the
15 622 response regulator LuxO. *Microbiology*. 157, 99-110. 10.1099/mic.0.041228-0
16 623 Wickham, H., 2016. *ggplot2: Elegant graphics for data analysis*. Springer-Verlag, New York,
17 624 USA, pp. 260.
18
19 625
20
21
22
23
24
25
26
27
28
29
30
31
32
33
34
35
36
37
38
39
40
41
42
43
44
45
46
47
48
49
50
51
52
53
54
55
56
57
58
59
60
61
62
63
64
65

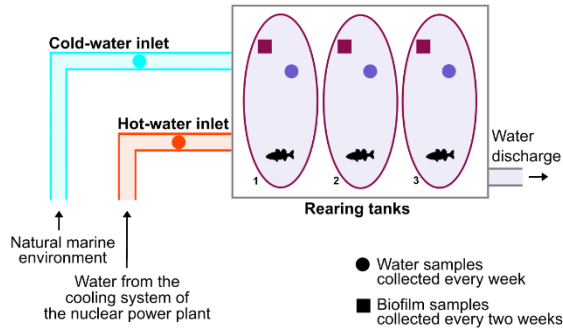
14
15
16
17
18
19
20
21
22
23
24
25
26
27
28
29
30
31
32
33
34
35
36
37
38
39
40
41
42
43
44
45
46
47
48
49
50
51
52
53
54
55
56
57
58
59
60
61
62
63
64
65

626 Table 1. Means of parameters recorded from April to October 2018 in the aquaculture facilities.

Sampling months	Temperature (°C)			pH			Salinity			Conductivity (ms.cm ⁻¹)			Dissolved oxygen (mg.L ⁻¹)			Fish density (kg.m ⁻³)			Fish mortality per week (%)		
	Cold-water inlet	Hot-water inlet	Rearing tanks	Cold-water inlet	Hot-water inlet	Rearing tanks	Cold-water inlet	Hot-water inlet	Rearing tanks	Cold-water inlet	Hot-water inlet	Rearing tanks	Tank 1	Tank 2	Tank 3	Tank 1	Tank 2	Tank 3	Tank 1	Tank 2	Tank 3
April	10.2	21.4	18.1	8.1	8.0	7.8	33.8	33.8	34.1	51.5	51.6	51.9	7.2	5.8	7.1	28.3	54.5	31.8	0.02	0.13	0.04
May	13.2	24.0	18.8	8.1	8.0	7.8	34.2	34.6	34.4	51.9	52.6	52.2	7.1	7.0	5.8	37.2	28.5*	34.2	0.01	0.02	0.01
June	17.0	24.3	19.2	7.8	7.9	7.5	34.1	34.6	34.2	51.9	52.5	52.0	5.9	5.4	5.4	42.8	39.5	37.5	0.00	0.08	0.29
July	20.0	24.1	20.2	7.8	7.8	7.4	33.8	34.1	33.9	51.5	51.9	51.6	5.6	5.5	5.4	52.5	47.0	35.5	0.01	0.01	0.04
August	20.3	24.0	20.4	8.0	7.9	7.5	34.5	34.6	34.8	52.3	52.5	52.4	6.1	6.4	5.5	54.0	55.8	43.6	0.03	0.04	0.06
September	18.0	24.1	18.4	8.1	8.0	7.4	34.4	35.4	34.9	52.2	53.6	53.0	6.4	5.4	5.6	62.8	67.0	53.0	0.02	0.01	0.04
October	15.8	24.7	18.5	7.7	7.7	7.1	34.6	34.8	34.6	52.5	52.8	52.6	7.5	5.0	5.7	51.3*	74.8	59.0	0.06	0.01	0.04

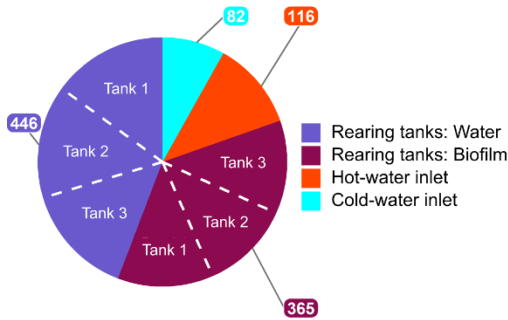
*The on-growing batch of fish was removed and transported to a new rearing tank more suitable for their size, and a new batch of fish of smaller size was put in the rearing tank used in this study

627

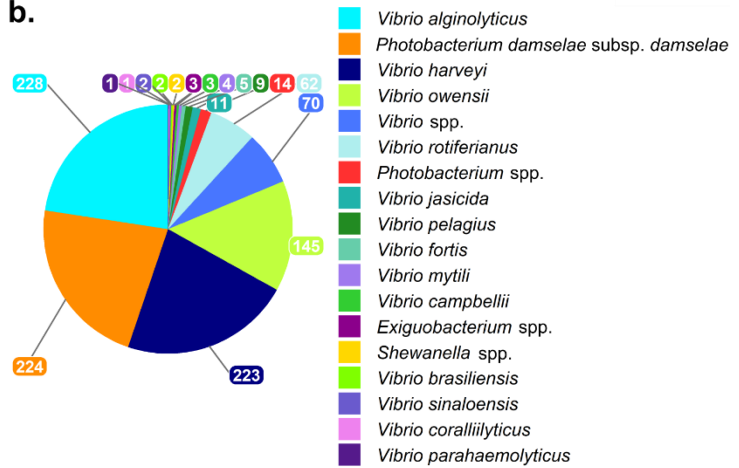


628
 629 Figure 1. Schematic representation of the sampling areas on the fish farm, illustrating the
 630 sampling compartments and types of samples collected. The water samples were collected in the
 631 rearing tanks, and in the cold- and hot-water inlets every week. The biofilm samples were
 632 collected in the rearing tanks every two weeks.

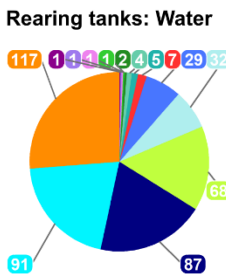
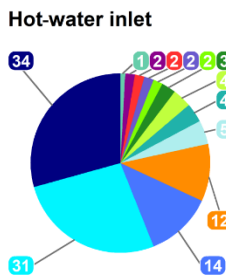
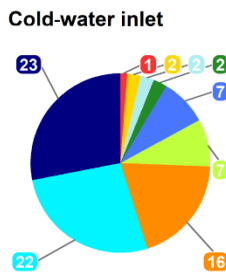
a.



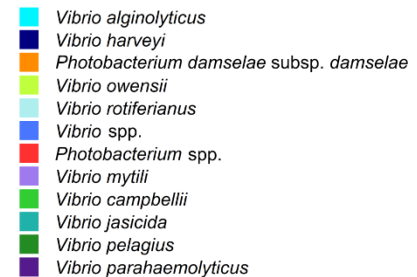
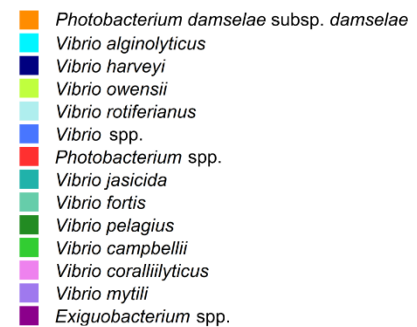
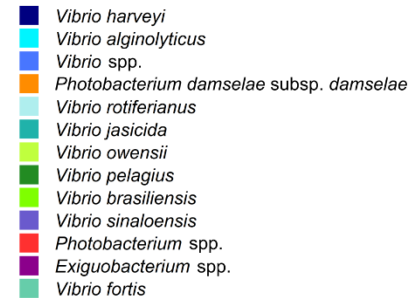
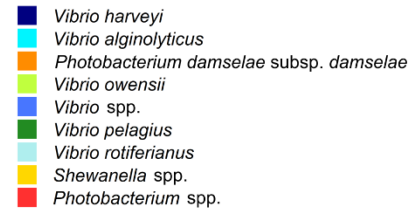
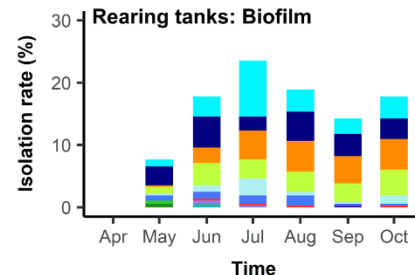
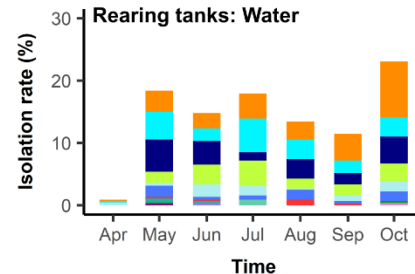
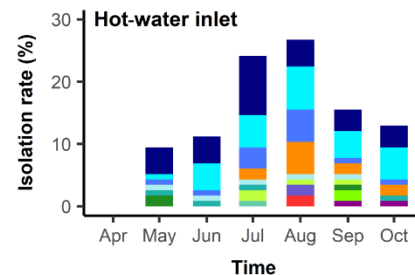
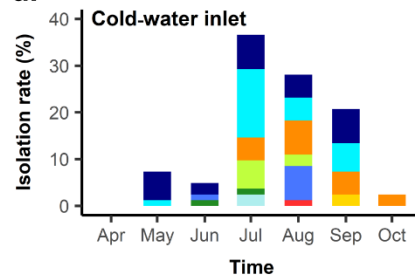
b.



c.

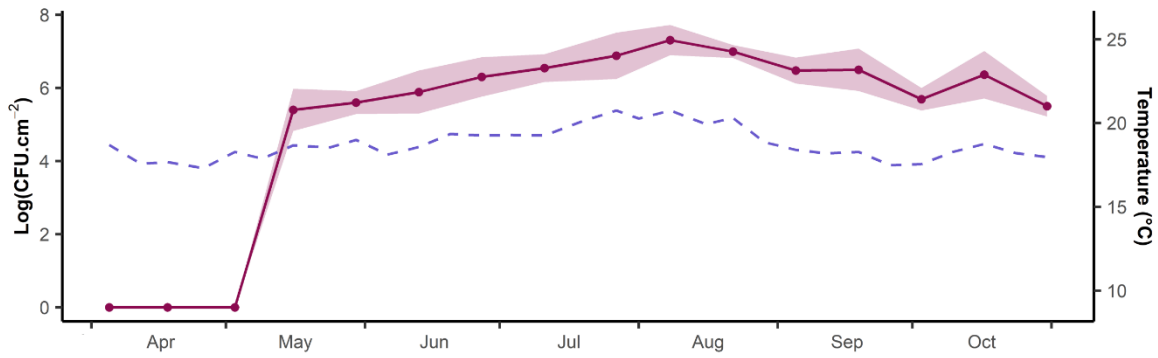
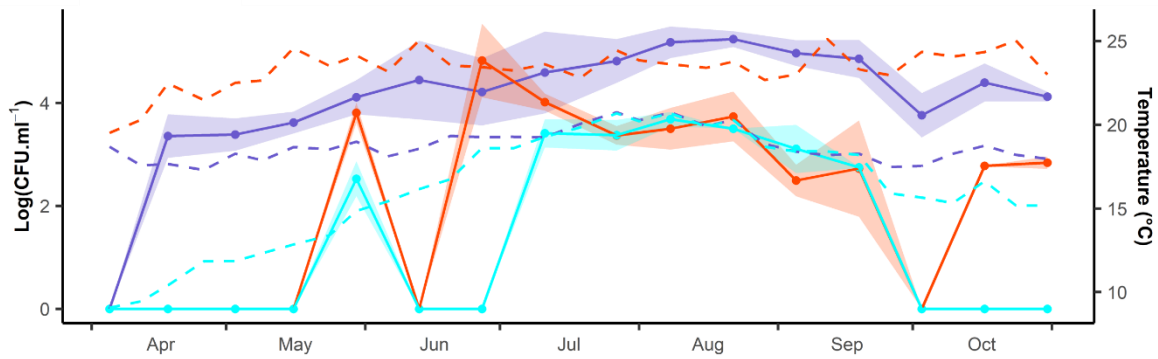


d.

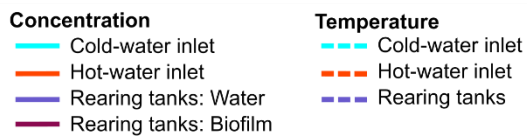
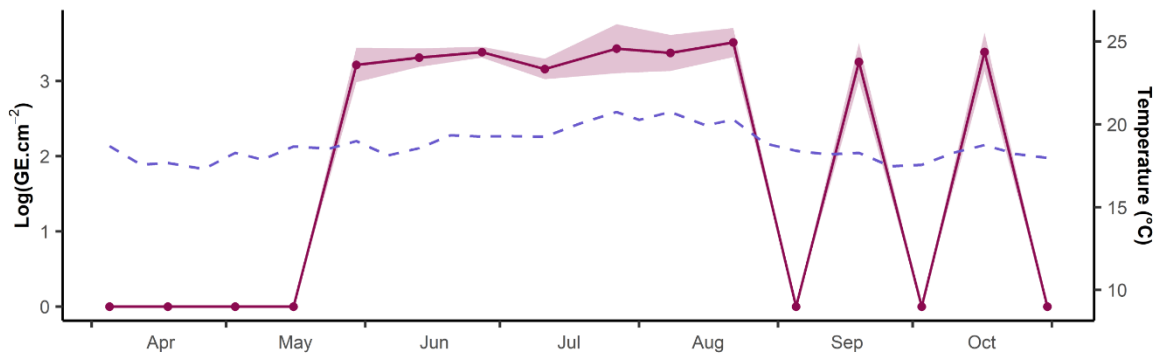
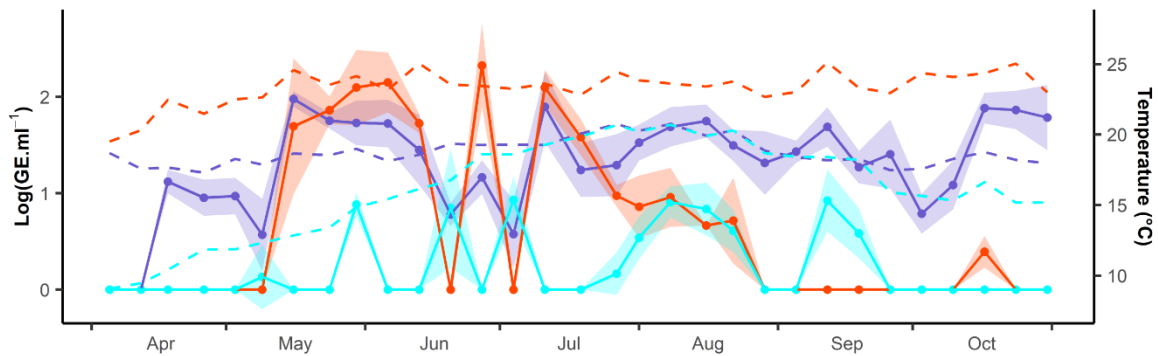


1
2
3
4 634 Figure 2. Qualitative analysis of the distribution and identification of the 1009 isolates (TCBS
5
6 635 agar, 37 °C), using MALDI-TOF MS. a. Relative proportions of the isolates collected from the
7
8
9 636 different sampling sites: rearing tanks and hot-/cold- water inlets and different sample types:
10
11 637 water and biofilm. b. Relative proportions of identified species regardless of the sampling site and
12
13
14 638 sample type. c. Relative proportions of identified species in the different sampling sites and
15
16 639 sample types. d. Identified species in the different sampling sites and sample types throughout the
17
18
19 640 sampling campaign, from April to October 2018. The key on the right indicates the color codes of
20
21 641 the identified species, ranked from the most abundant (top) to the least abundant (bottom).
22
23
24
25
26
27
28
29
30
31
32
33
34
35
36
37
38
39
40
41
42
43
44
45
46
47
48
49
50
51
52
53
54
55
56
57
58
59
60
61
62
63
64
65

1
2
3
4 **a. Presumptive Vibrionaceae - TCBS agar counts**



30
31 **b. *Vibrio harveyi* - real-time PCR quantification**



642

1
2
3
4 643 Figure 3. Fluctuation in abundance of a. presumptive culturable Vibrionaceae on TCBS agar,
5
6 644 37 °C, and b. *Vibrio harveyi* in the cold- and hot-water inlets, water and biofilm samples from
7
8
9 645 rearing tanks. For inlet samples, abundance values are the mean of three samples, collected
10
11 646 simultaneously. For rearing tanks, abundance values are the mean of nine replicates,
12
13
14 647 corresponding to the three replicates collected simultaneously from each of the three rearing
15
16 648 tanks. The area around the curves represent the 95% confidence intervals for the abundance
17
18
19 649 index. Water temperature in all compartments are also shown.

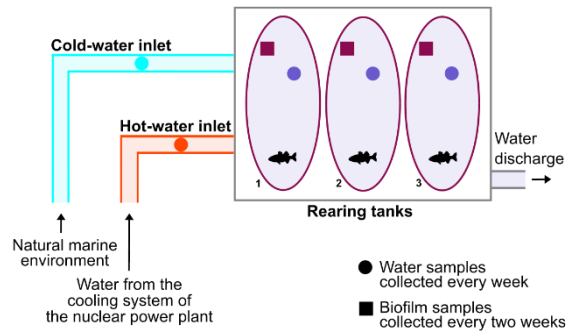


Figure 1. Schematic representation of the sampling areas on the fish farm, illustrating the sampling compartments and types of samples collected. The water samples were collected in the rearing tanks, and in the cold- and hot-water inlets every week. The biofilm samples were collected in the rearing tanks every two weeks.

Table 1. Means of parameters recorded from April to October 2018 in the aquaculture facilities.

Sampling months	Temperature (°C)			pH			Salinity			Conductivity (ms.cm ⁻¹)			Dissolved oxygen (mg.L ⁻¹)			Fish density (kg.m ⁻³)			Fish mortality per week (%)		
	Cold-water inlet	Hot-water inlet	Rearing tanks	Cold-water inlet	Hot-water inlet	Rearing tanks	Cold-water inlet	Hot-water inlet	Rearing tanks	Cold-water inlet	Hot-water inlet	Rearing tanks	Tank 1	Tank 2	Tank 3	Tank 1	Tank 2	Tank 3	Tank 1	Tank 2	Tank 3
April	10.2	21.4	18.1	8.1	8.0	7.8	33.8	33.8	34.1	51.5	51.6	51.9	7.2	5.8	7.1	28.3	54.5	31.8	0.02	0.13	0.04
May	13.2	24.0	18.8	8.1	8.0	7.8	34.2	34.6	34.4	51.9	52.6	52.2	7.1	7.0	5.8	37.2	28.5*	34.2	0.01	0.02	0.01
June	17.0	24.3	19.2	7.8	7.9	7.5	34.1	34.6	34.2	51.9	52.5	52.0	5.9	5.4	5.4	42.8	39.5	37.5	0.00	0.08	0.29
July	20.0	24.1	20.2	7.8	7.8	7.4	33.8	34.1	33.9	51.5	51.9	51.6	5.6	5.5	5.4	52.5	47.0	35.5	0.01	0.01	0.04
August	20.3	24.0	20.4	8.0	7.9	7.5	34.5	34.6	34.8	52.3	52.5	52.4	6.1	6.4	5.5	54.0	55.8	43.6	0.03	0.04	0.06
September	18.0	24.1	18.4	8.1	8.0	7.4	34.4	35.4	34.9	52.2	53.6	53.0	6.4	5.4	5.6	62.8	67.0	53.0	0.02	0.01	0.04
October	15.8	24.7	18.5	7.7	7.7	7.1	34.6	34.8	34.6	52.5	52.8	52.6	7.5	5.0	5.7	51.3*	74.8	59.0	0.06	0.01	0.04

*The on-growing batch of fish was removed and transported to a new rearing tank more suitable for their size, and a new batch of fish of smaller size was put in the rearing tank used in this study

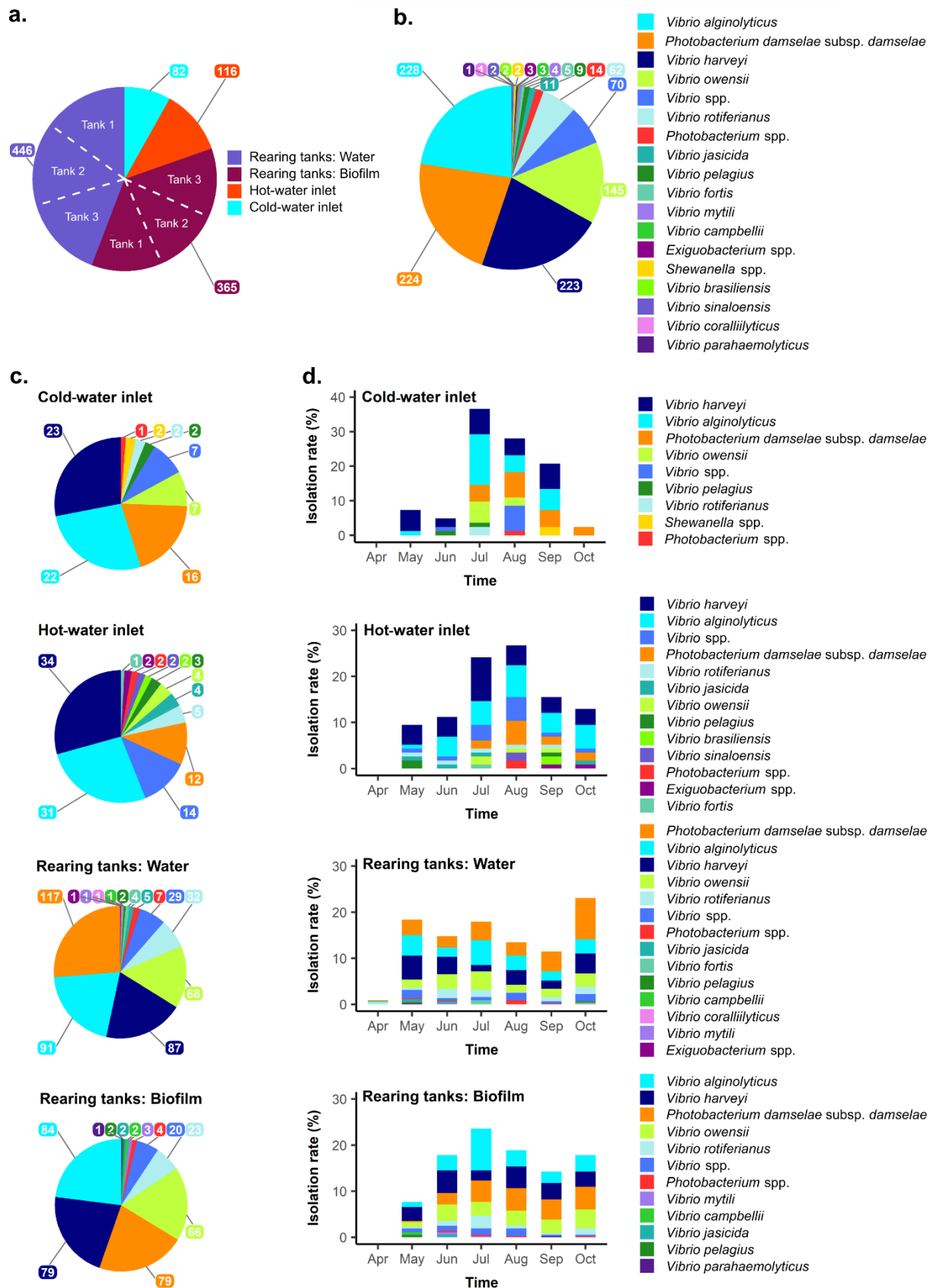


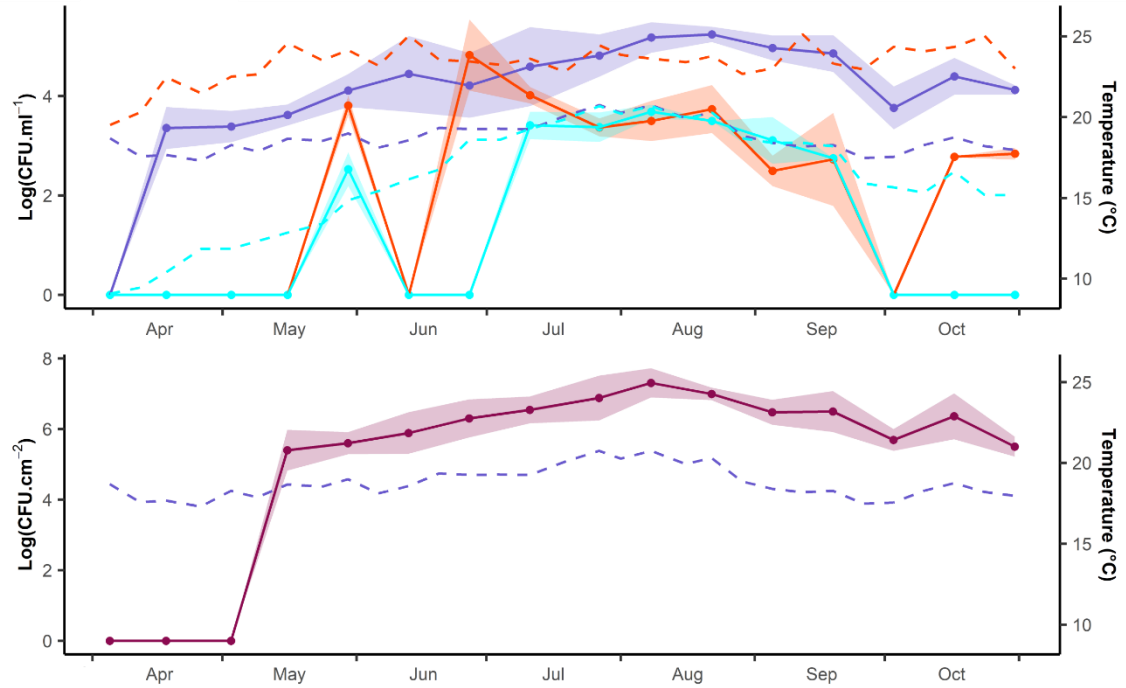
Figure 2. Qualitative analysis of the distribution and identification of the 1009 isolates (TCBS agar, 37°C), using MALDI-TOF MS. a. Relative proportions of the isolates collected from the different

sampling sites: rearing tanks and hot-/cold- water inlets and different sample types: water and biofilm.

b. Relative proportions of identified species regardless of the sampling site and sample type. c.

Relative proportions of identified species in the different sampling sites and sample types. d. Identified species in the different sampling sites and sample types throughout the sampling campaign, from April to October 2018. The key on the right indicates the color codes of the identified species, ranked from the most abundant (top) to the least abundant (bottom).

a. Presumptive Vibrionaceae - TCBS agar counts



b. *Vibrio harveyi* - real-time PCR quantification

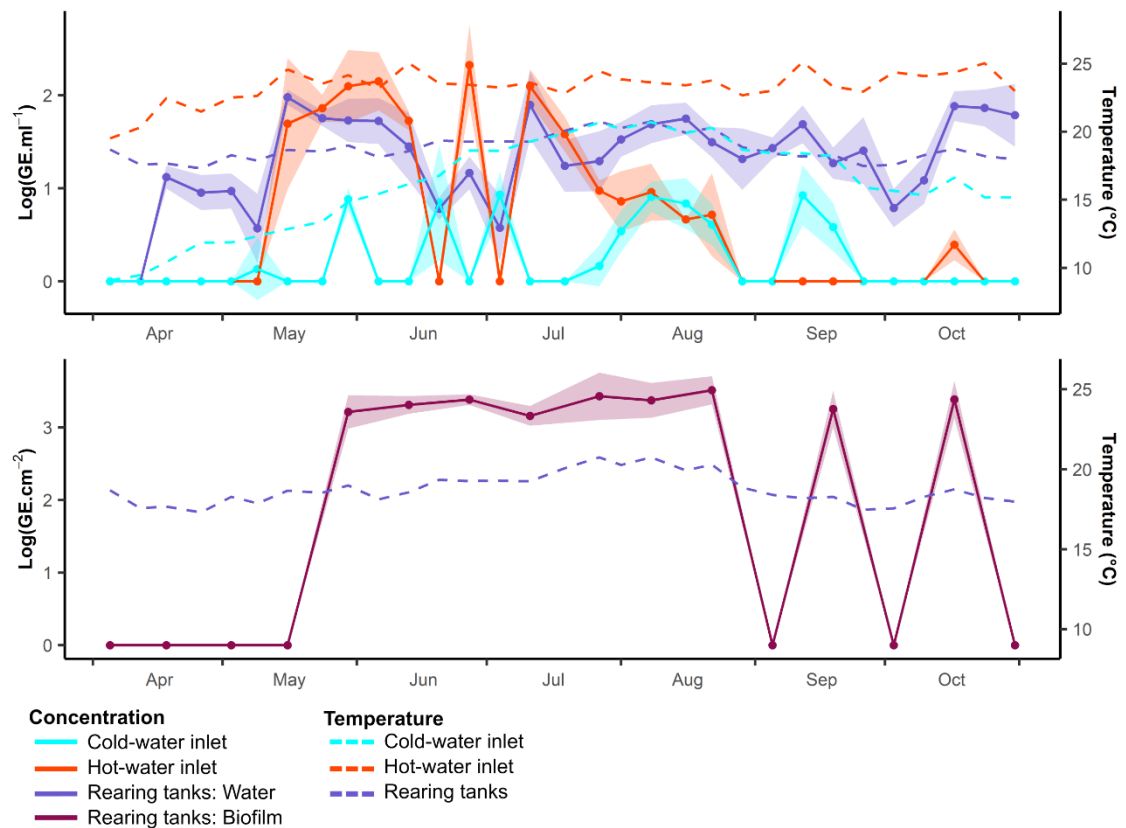


Figure 3. Fluctuation in abundance of a. presumptive culturable Vibrionaceae on TCBS agar, 37°C, and b. *Vibrio harveyi* in the cold- and hot-water inlets, water and biofilm samples from rearing tanks. For inlet samples, abundance values are the mean of three samples, collected simultaneously. For

rearing tanks, abundance values are the mean of nine replicates, corresponding to the three replicates collected simultaneously from each of the three rearing tanks. The area around the curves represent the 95% confidence intervals for the abundance index. Water temperature in all compartments are also shown.

Declaration of interests

The authors declare that they have no known competing financial interests or personal relationships that could have appeared to influence the work reported in this paper.

The authors declare the following financial interests/personal relationships which may be considered as potential competing interests:



Click here to access/download
Supplementary Material
Supplemental material.docx

